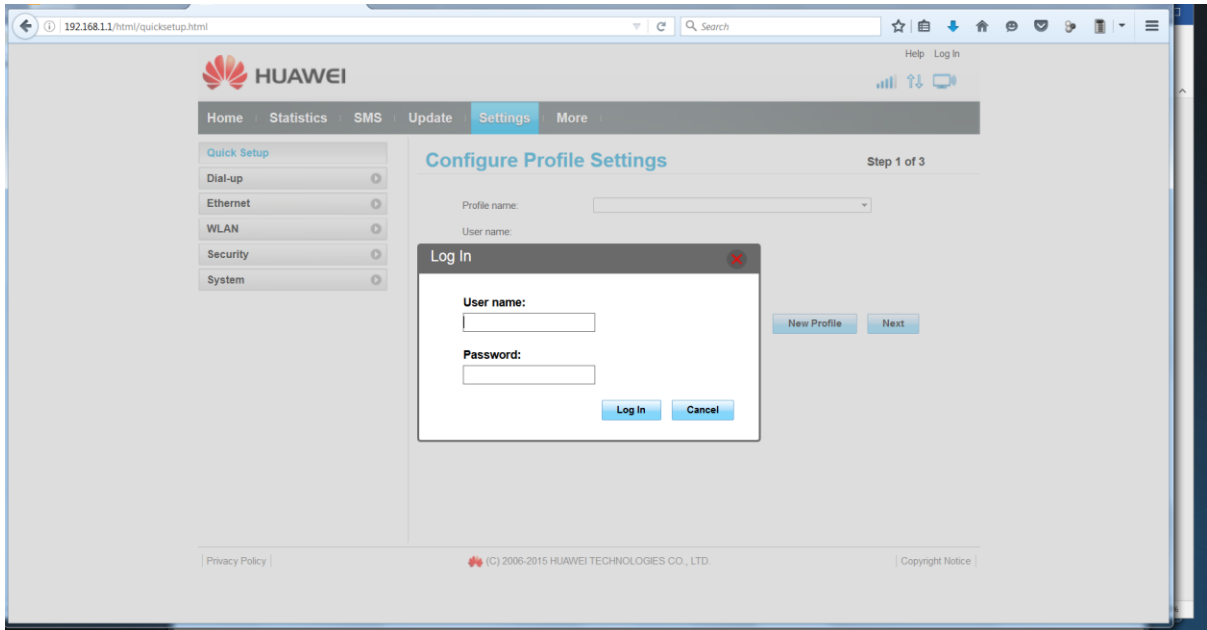


0800 000 945

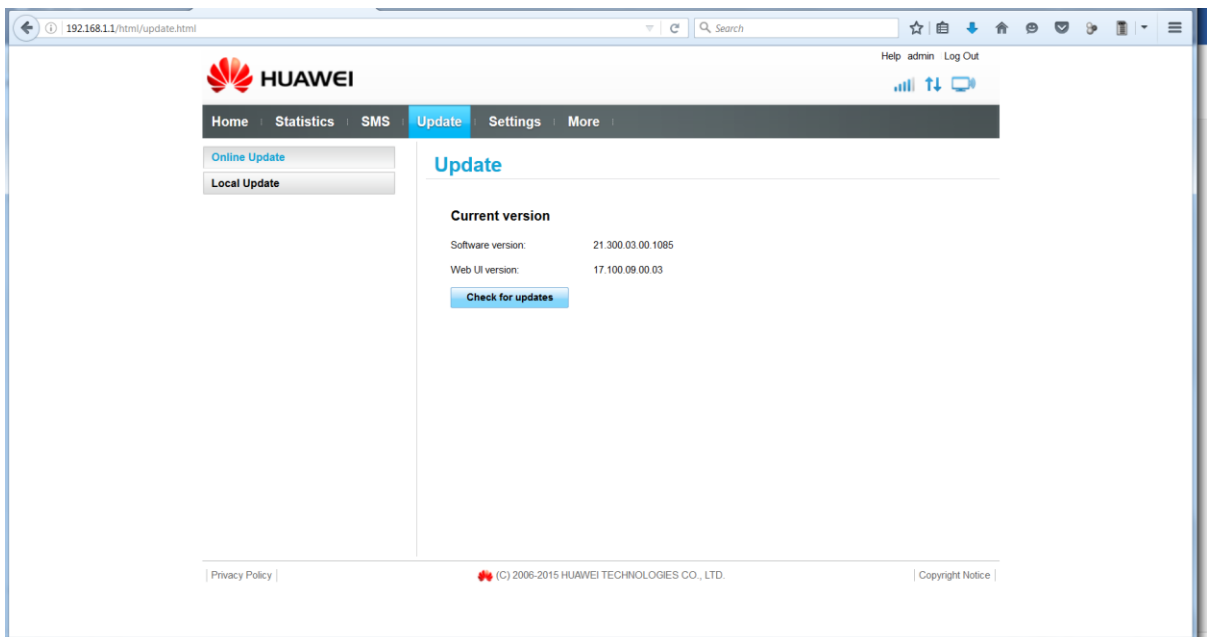
ultimatebroadband.co.nz

## B315 FIRMWARE SETUP GUIDE

1. Power up router with Live SIM and connect PC. Enter IP address of 192.168.1.1 into Web gui, Login with user: admin password: admin and don't change the password for the router

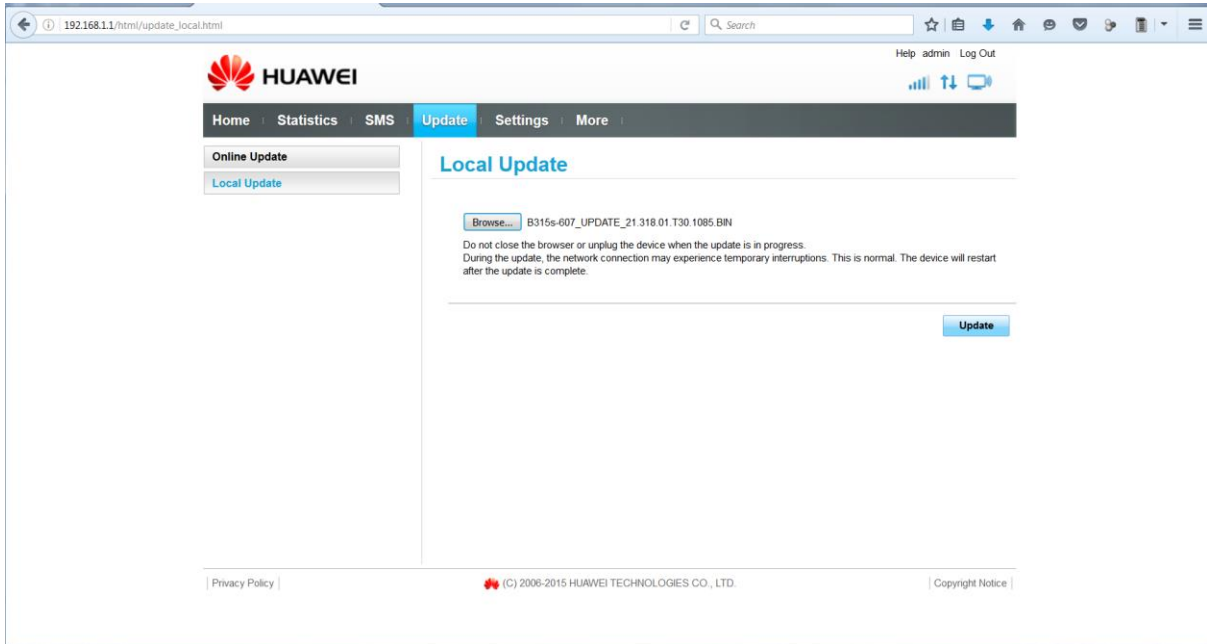


2. Select update & local update – click browse and locate .BIN file



0800 000 945

ultimatebroadband.co.nz



Select update and the router will take about 5 minutes to update –

3. The upgrade is completed once this box below appears, if this doesn't show up after 5mins please power off the router.

